

||| ter Hürne

# Laminate



# A decision for quality

As a German family-owned business from the Münster region we have dedicated ourselves for more than 60 years to developing products that are sustainable and are conducive to healthy living, while setting the highest standards in terms of function and aesthetics.

Taking nature as our example, we use our passion, expertise and flair for good design to create unique laminate floors that integrate traditional craft skills and sophisticated technology combined with maximum resource efficiency for our shared environment.

With every ter Hürne laminate plank you have a quality product made in Germany beneath your feet, in which we have taken particular care to only use natural components compatible with a healthy domestic environment. You can just sit back, and relax as the mood takes you.

CEOs:  
Erwin and Bernhard ter Hürne



F15 | Oak-mix contrast beige\*

\*Wood/stone reproduction. Colour reproductions are not binding.

# The result of experience

60 years ter Hürne – That represents 60 years' experience with the natural material wood. Wood is our passion, which has shaped us from childhood. It is the measure of everything that we do. Our laminate floors are just one result of this long experience.

## Natural designs

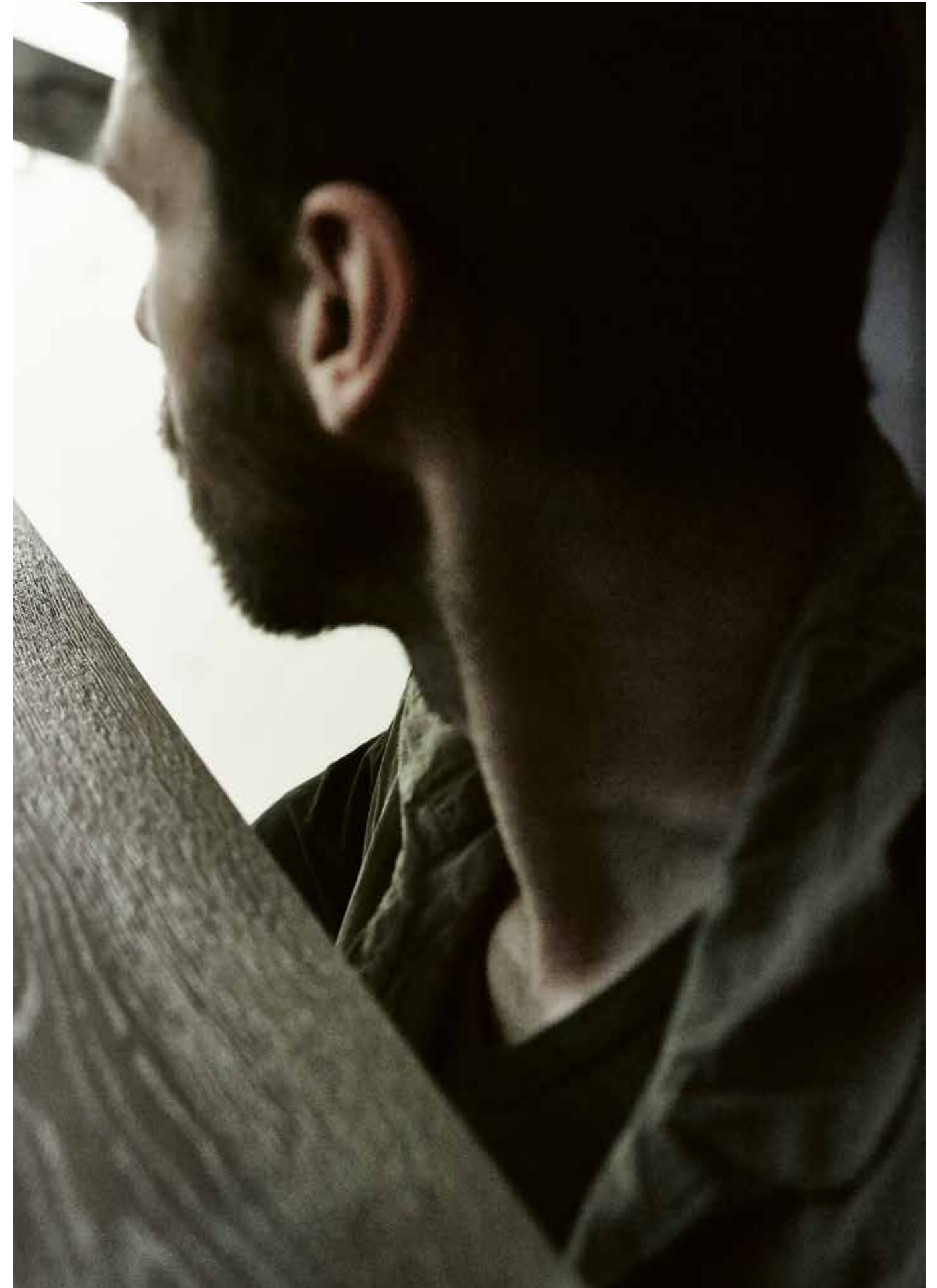
From the species of wood, to the grain, right down to the structure. You will be impressed by the naturalness and authenticity of our laminate floors.

## Form and design

From the classic plank to the strip floor to the extra wide plank: we transfer the design language of our real wood floors to our laminate designs.

## An experienced eye for details

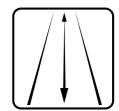
From the V-groove to a prominent U-groove to the no groove strip ship floors: we know how important details are for the appearance of a perfect floor.



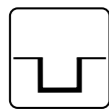
STRUCTURE



REGISTER  
EMBOSSED



LONG PLANK



U-GROOVE



V-GROOVE

# Our claim to quality

## A surface for all situations

The surface of our laminate floors is robust and can stand up to a lot.

It provides very good protection against scratches, heat and the effects of light and bacteria. The floor retains its good looks with little maintenance.

## A high-quality HDF baseboard

The core of our laminate floors. The baseboard consists of over 90% wood and is highly compressed.

It has an additional protection against swelling, which protects against moisture in combination with the impermeable surface and the stabilising layer.

The baseboard compensates unevenness in the sub-floor and makes installation much easier.

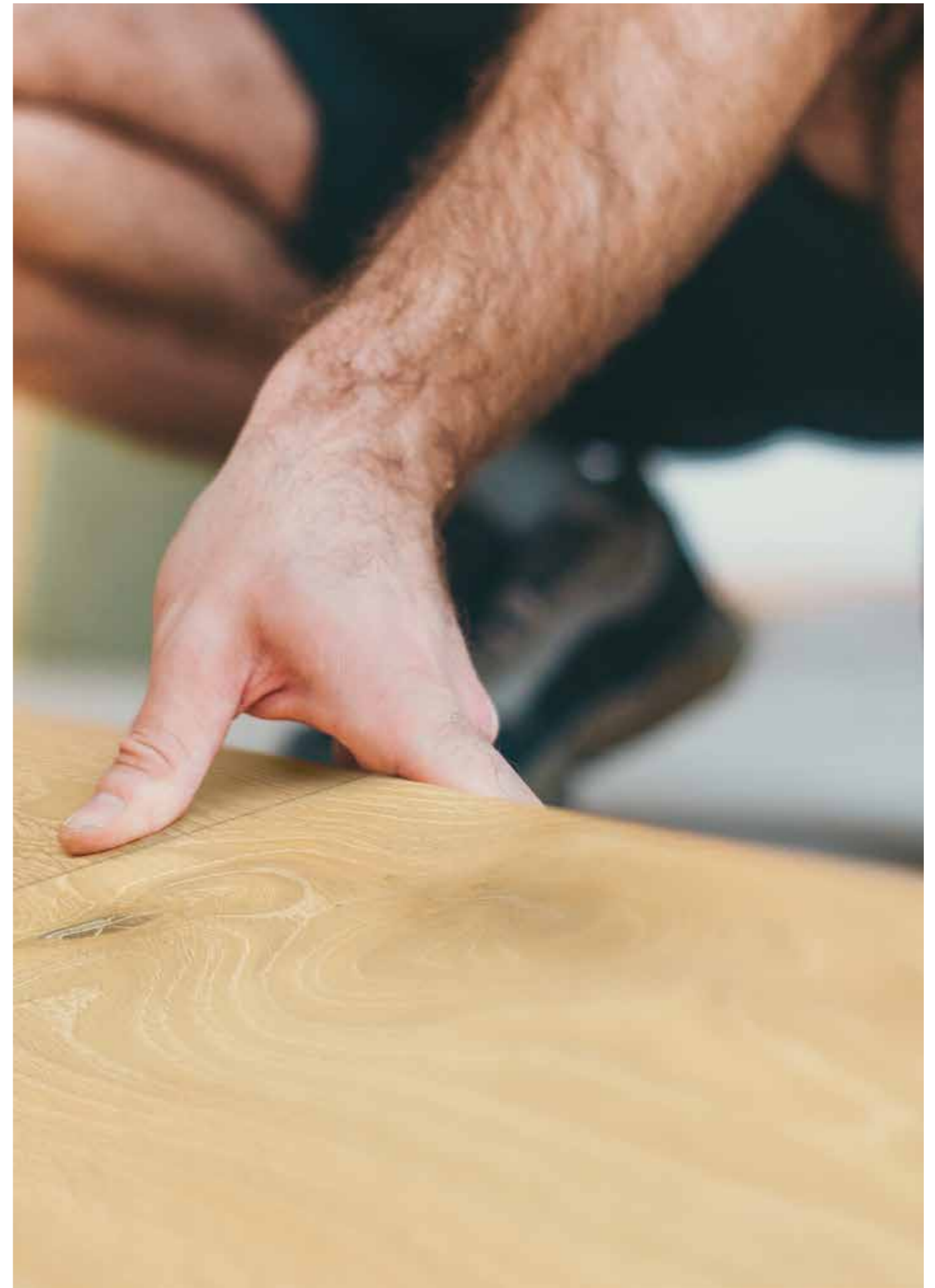
Its good thermal conductivity means it has the perfect properties for use over underfloor heating systems.

## SmartConnect click connection

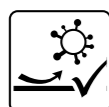
Our smart click connection ensures installation is quick, easy and secure. It turns every DIY enthusiast into a professional.

The powerful locking system puts an end to unwanted gapping.

Smart technology for a lasting beautiful floor – guaranteed.



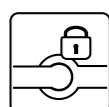
WARRANTY



ANTIBACTERIAL



UNDERFLOOR HEATING SYSTEM



SMART CONNECT



AQUA PROTECTED

# We take our environmental responsibility seriously

## Made in Germany

Our laminate floors are manufactured in Germany with the guaranteed quality and safety you expect from the 'Made in Germany' label.

We protect jobs in the region and apply short transport routes in order to save resources.

## Sustainability

Our laminate floors are PEFC-certified. We support the environmental and social aspects of a fully traceable and recognised sustainable forestry industry.

A considerable proportion of our baseboards is manufactured from trees, which can no longer be used for furniture or hardwood flooring; due to storm damage, for example.

A contribution to the climate – one cubic metre of wood stores one tonne of CO2. By choosing a laminate floor, you are making an active contribution to climate protection, because our floor is mostly made of wood and stores CO2.

## Healthy living

Accolades like the Blue Angel and the Eco Certificate confirm that our laminate floors are low-emission products. We are better than the statutory standards for zero-emission living environments.

Our laminate floors are free from chlorine and plasticisers.



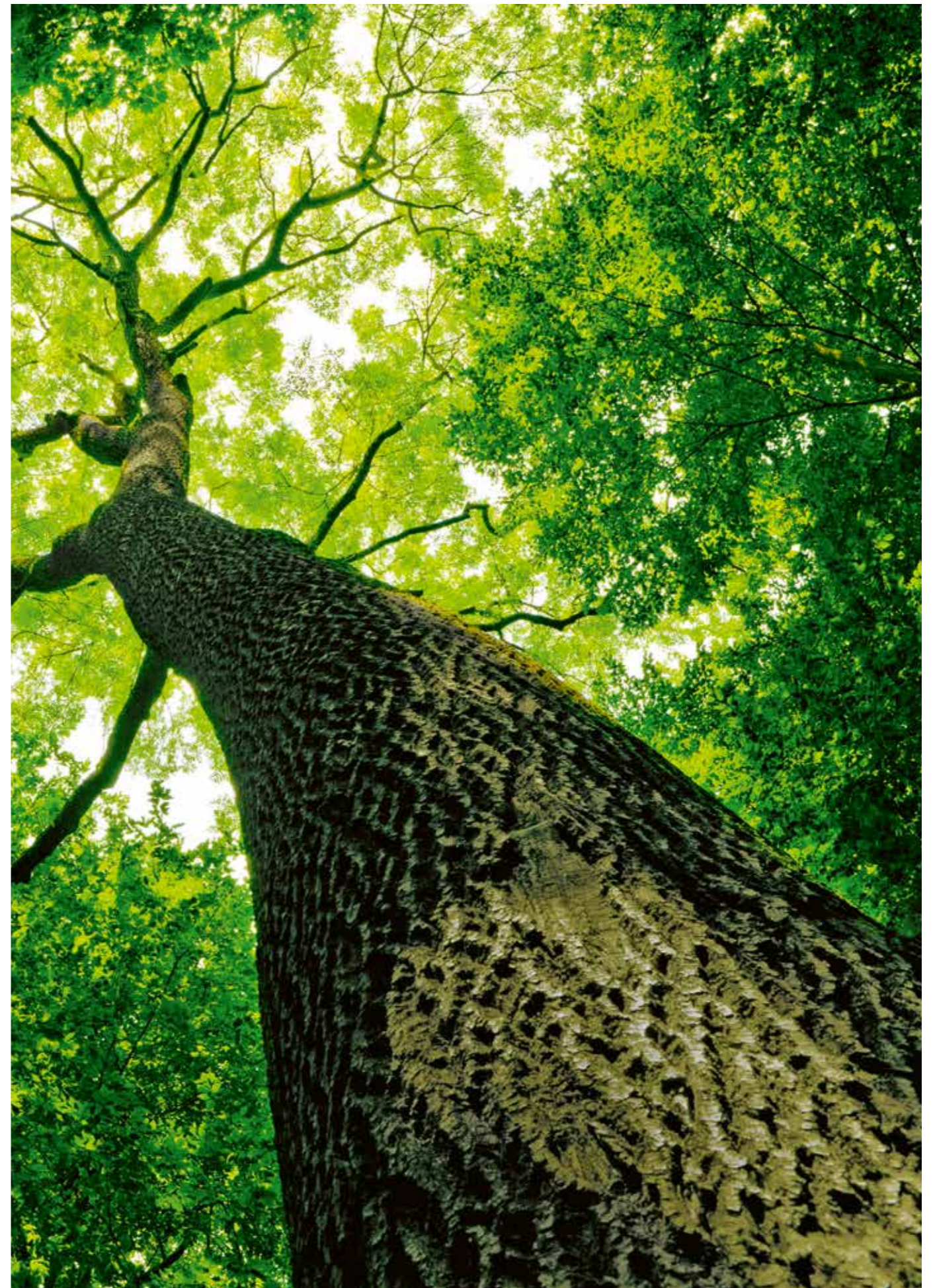
\*Information sur le niveau d'émission de substances volatiles dans l'air intérieur, présentant un risque de toxicité par inhalation, sur une échelle de classe allant de A+ (très faibles émissions) à C (fortes émissions).



A+ only for dimensions 1286 x 194 mm und 1286 x 243 mm



PEFC not in dimensions 1286 x 194 mm und 1286 x 243 mm





**Classic Line**



**Trend Line**



**Grand Line**

## Three collections

In order to make the choice of your favourite ter Hürne floor as easy as possible, we have arranged our floors into three collections.

From the Classic Line with classic designs and formats, the Trend Line, with wide and trendy designs, to the Grand Line with its classy large plank formats.

Immerse yourself in the world of ter Hürne laminates and find your dream floor.



—Classic Line—



—Trend Line—



—Grand Line—





## Classic Line - classic and timeless

F11 | Old wood mix beige\*



## Varied planks, strip floors and multi strip

In the Classic Line we group classic floor designs in one collection. The classic plank floor's strength is its clearly expressed, timeless design.

Strip floors are characterised by their versatility and lively appearance. The boards comprise two or three staves next to each other. Because the strip floor has no grooves, the floor seems infinite.

Multi strip floors gain their effect from the lively and unique appearance created by the variety of colours of the staves within one plank. It has a dynamic, virtuoso effect and looks handmade.



F03 | Oak American Diners\*



**Tile Georgetown\***  
plank  
fine brushed  
matt

Art.-No.:  
1101020886  
1286 x 194 x 8 mm



**Oak diamond grey\***  
plank  
embossed/aged  
matt

Art.-No.:  
1101021705  
1286 x 194 x 8 mm



**Oak American Diners\***  
plank  
fine brushed  
matt

Art.-No.:  
1101020889  
1286 x 194 x 8 mm



**Oak Loft\***  
plank  
fine brushed  
matt

Art.-No.:  
1101020888  
1286 x 194 x 8 mm





**F05**  
**Oak light beige\***  
plank  
linear aged  
matt  
Art.-No.:  
1101020825  
1285 x 192 x 8 mm



**F06**  
**Oak gold brown\***  
plank  
linear aged  
matt  
Art.-No.:  
1101020812  
1285 x 192 x 8 mm



**F09**  
**Oak horizon grey\***  
multi strip  
fine brushed  
matt  
Art.-No.:  
1101021709  
1286 x 194 x 8 mm



**F10**  
**Oak plane-marked grey white\***  
2-strip  
linear brushed  
matt  
Art.-No.:  
1101020703  
1285 x 192 x 8 mm



**F07**  
**Oak pastel brown\***  
plank  
fine brushed  
matt  
Art.-No.:  
1101021708  
1286 x 194 x 8 mm



**F08**  
**Oak flannel grey\***  
plank  
fine brushed  
matt  
Art.-No.:  
1101021710  
1286 x 194 x 8 mm



**F11**  
**Old wood mix beige\***  
multi strip  
linear brushed  
matt  
Art.-No.:  
1101020824  
1285 x 192 x 8 mm



**F12**  
**Oak deep brown\***  
plank  
fine brushed  
matt  
Art.-No.:  
1101020834  
1285 x 192 x 8 mm



F13



**Oak dune beige\***  
plank  
fine brushed  
matt

Art.-No.:  
1101021707

1286 x 194 x 8 mm



F14



**Oak willow grey\***  
plank  
fine brushed  
matt

Art.-No.:  
1101021706

1286 x 194 x 8 mm



F17 | Oak October brown\*



F15



**Oak-mix contrast beige\***  
multi strip  
rough pored  
matt

Art.-No.:  
1101020818

1285 x 192 x 8 mm



F16



**Oak sand brown\***  
plank  
fine brushed  
matt

Art.-No.:  
1101020826

1285 x 192 x 8 mm



F17



**Oak October brown\***  
plank  
fine brushed  
matt

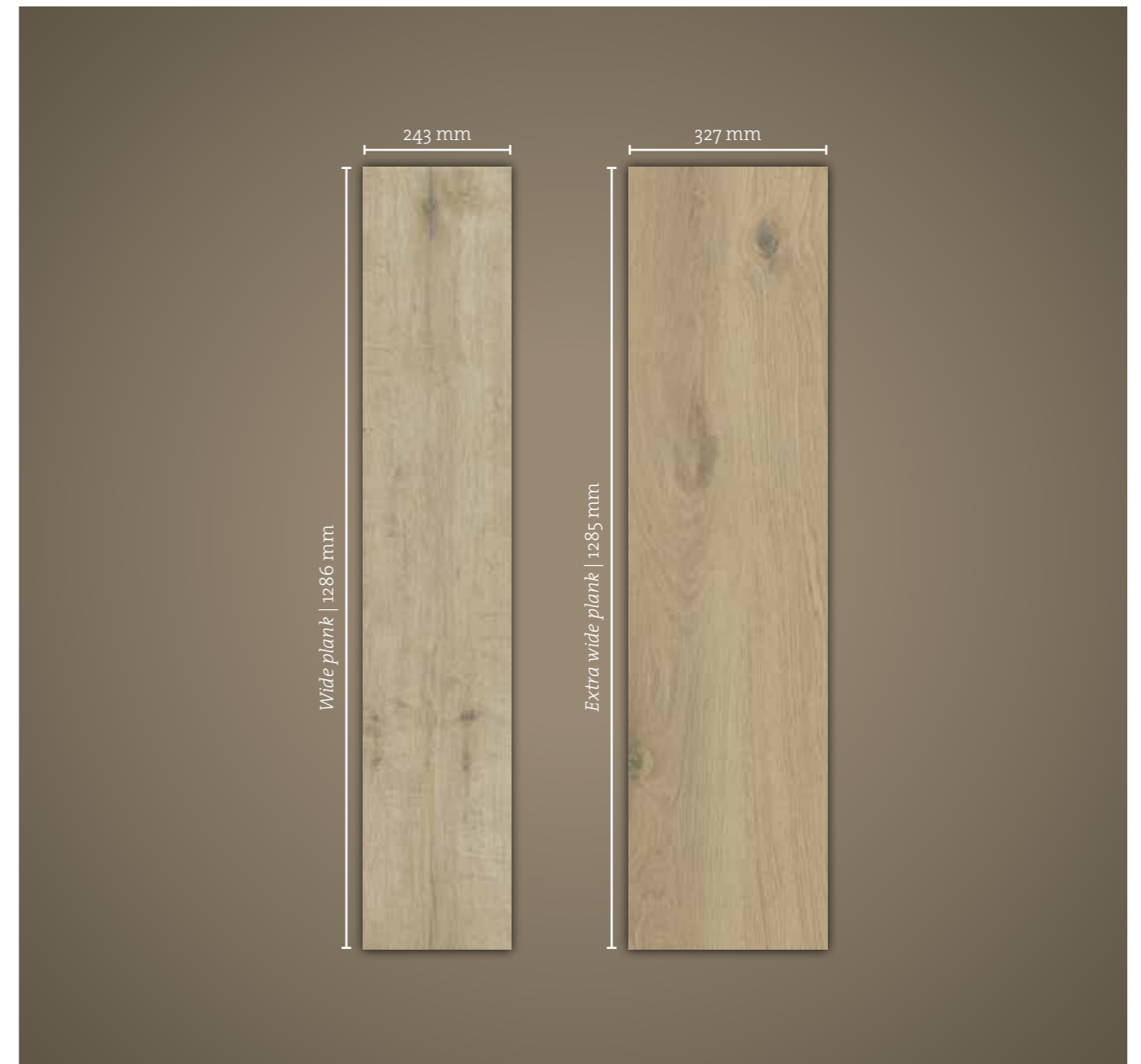
Art.-No.:  
1101020827

1285 x 192 x 8 mm



## Trend Line - wide and impressive

G09 | Oak Cumberland pale brown\*



## Wide planks and extra wide planks

In the Trend Line, our planks attract attention to their special width. The two different width dimensions create different impressions in the floorscape, which perfectly harmonise with the selection of designs.

Impressive and multifaceted.



G04 | Oak Barber Shop\*



**Oak Hotel California\***  
wide plank  
fine brushed  
matt

Art.-No.:  
1101020893  
1286 x 243 x 8 mm



**Oak Dancefloor\***  
wide plank  
fine brushed  
matt

Art.-No.:  
1101020899  
1286 x 243 x 8 mm



**Elm Coffee Bar\***  
wide plank  
fine brushed  
matt

Art.-No.:  
1101020894  
1286 x 243 x 8 mm



**Oak Barber Shop\***  
wide plank  
fine brushed  
matt

Art.-No.:  
1101020897  
1286 x 243 x 8 mm



**Oak Whisky Lounge\***  
wide plank  
fine brushed  
matt

Art.-No.:  
1101020900  
1286 x 243 x 8 mm



**G06**  
**Oak smoke grey\***  
wide plank  
fine brushed  
matt  
Art.-No.: 1101021711  
1286 x 243 x 8 mm



**G07**  
**Oak alabaster\***  
extra-wide plank  
linear brushed  
matt  
Art.-No.: 1101021683  
1285 x 327 x 8 mm



**G09a**  
**Oak Cumberland pale brown\***  
extra-wide plank  
smooth  
matt  
Art.-No.: 1101021716  
1285 x 327 x 8 mm



**G10**  
**Oak silver grey\***  
extra-wide plank  
linear brushed  
matt  
Art.-No.: 1101021686  
1285 x 327 x 8 mm



**G08**  
**Oak almond beige\***  
extra-wide plank  
linear brushed  
matt  
Art.-No.: 1101021684  
1285 x 327 x 8 mm



**G09**  
**Oak Cumberland pale brown\***  
extra-wide plank  
smooth  
matt  
Art.-No.: 1101021712  
1285 x 327 x 8 mm



**G11**  
**Cement look light grey\***  
tile  
fine structured  
matt  
Art.-No.: 1101020848  
1285 x 327 x 8 mm



**G12**  
**Stone anthracite grey\***  
tile  
fine structured  
matt  
Art.-No.: 1101021685  
1285 x 327 x 8 mm



**Grand Line -  
long and generous**

H07 | Oak cream beige\*



## Long planks

Visual expanse and a great feeling of spaciousness.

If you appreciate a wide open and generous living space, this can be enhanced by installing long planks. Spaces appear wider and even more generous. A wonderful opportunity to achieve even more with the floor.

Our 2 metre long planks come in two different widths. The 192 mm wide format appears slim and elegant, while the 242 mm wide plank conveys a sense of generosity and presence.

Our planks emphasize their full size by means of the 4 sided grooves. It is this emphasis and contrast that gives the planks their overall impact. With a thickness of 10 mm, the plank meets the highest quality standards, offers ease of installation and walking comfort over the entire floor.



H01 | Oak moon grey\*



**Oak moon grey\***  
long plank  
linear brushed  
matt

2000 x 192 x 10 mm

Art.-No.:  
1101021578



**Oak pastel beige\***  
long plank  
linear brushed  
matt

2000 x 192 x 10 mm

Art.-No.:  
1101021577



**Oak copper brown\***  
long plank  
embossed/aged  
silk matt

2000 x 192 x 10 mm

Art.-No.:  
1101020811



**Chestnut sepia brown\***  
long plank  
embossed/fine brushed/sculptured  
matt

2000 x 192 x 10 mm

Art.-No.:  
1101020829



**Chestnut velvet brown\***  
long plank  
embossed/fine brushed/sculptured  
matt

Art.-No.:  
1101020839

2000 x 192 x 10 mm



**Oak white grey\***  
long plank  
rough pored  
matt

Art.-No.:  
1101021687

2000 x 242 x 10 mm



**Oak reed beige\***  
long plank  
fine brushed  
matt

Art.-No.:  
1101021690

2000 x 242 x 10 mm



**Oak autumn grey\***  
long plank  
linear brushed  
matt

Art.-No.:  
1101021691

2000 x 242 x 10 mm



**Oak cream beige\***  
long plank  
fine brushed  
matt

Art.-No.:  
1101021688

2000 x 242 x 10 mm



**Oak wheat beige\***  
long plank  
embossed/fine brushed/sculptured  
matt

Art.-No.:  
1101021689

2000 x 242 x 10 mm



**Oak Havanna brown\***  
long plank  
embossed/fine brushed/sculptured  
matt

Art.-No.:  
1101021692

2000 x 242 x 10 mm



# Technical properties



**20 years warranty**  
domestic usage



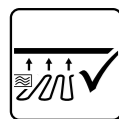
**Antibacterial**



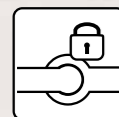
**Register embossed**



**Aqua protected**



**Suited for underfloor heating**



**SmartConnect connection**  
Install like a pro:  
simple, fast, safe.



Non-slip and flame resistant.



\*Information sur le niveau d'émission de substances volatiles dans l'air intérieur, présentant un risque de toxicité par inhalation, sur une échelle de classe allant de A+ (très faibles émissions) à C (fortes émissions).



A+ only for dimensions 1286 x 194 mm und 1286 x 243 mm

## 1 Robust and low-maintenance surface

- Resistant to scratches, heat, light and bacteria
- Authentic appearance and feel thanks to realistic surface structures
- Matt surface finish for very natural looks

## 5 SmartConnect click connection

- Quick, easy and safe installation
- Turns DIY enthusiasts into professionals
- The powerful locking system puts an end to unwanted joint formation!
- Smart technology for a lasting, beautiful floor

## 2 Natural design

- Natural wood designs based on our real wood floors
- Experienced decor development for a really special room atmosphere
- Lightprotect decorative design layer for brilliant colour

## 3 High-quality HDF baseboard

- Tough
- Dimensionally stable – stays in shape for a lasting, beautiful floor
- Additional protection against swelling
- Hides any irregularities in the substrate
- Perfect properties for underfloor heating systems

## 4 Stabilising layer

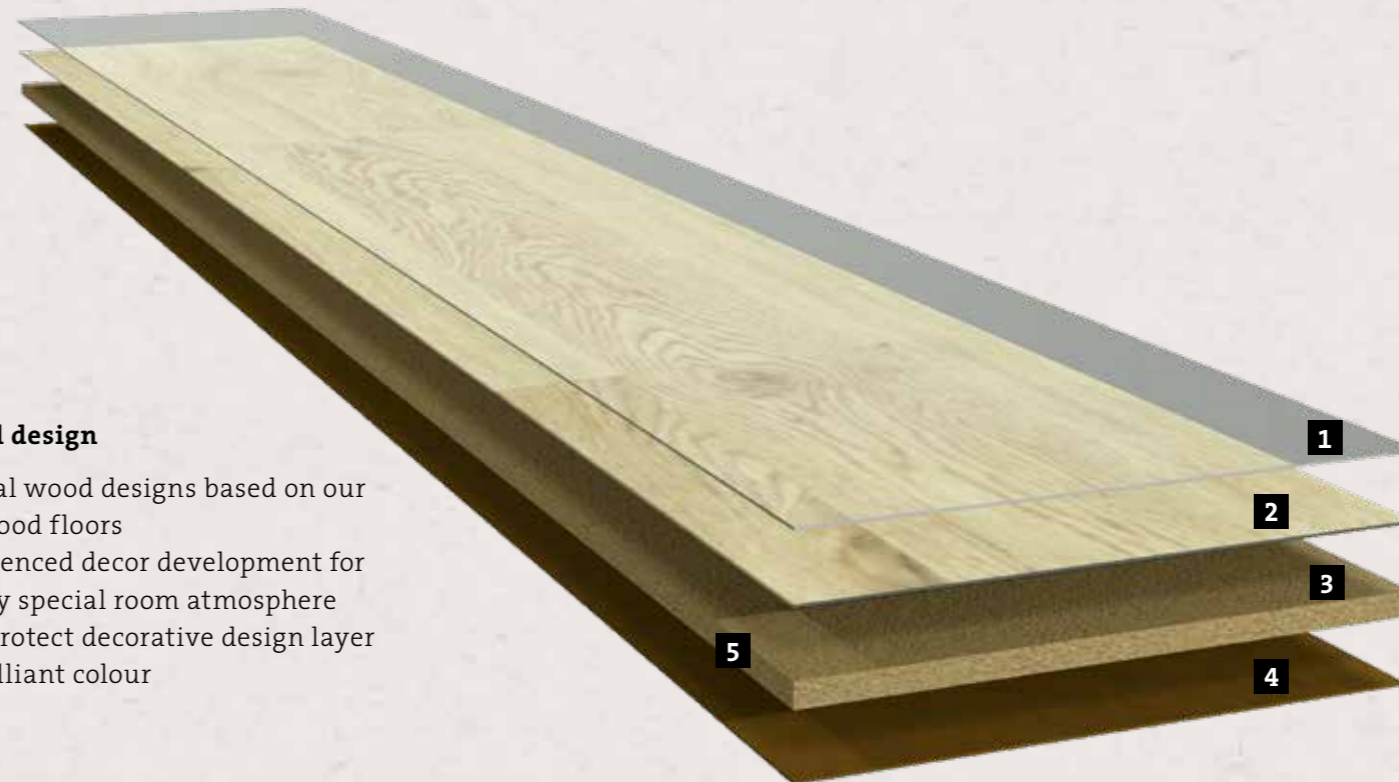
- Tension equalisation protects against shape deformation
- Impregnated for protection against moisture penetration

## Healthy living

- Our laminate floors are certified low-emission products.
- We are better than the required statutory standards for zero emission living.
- Our laminate floors consist over 90% of wood.
- They are free from chlorine and plasticisers.

## Made in Germany

- Our laminate floors are produced in Germany.
- Quality and safety guaranteed
- We are protecting regional jobs.
- Short transport routes save resources



PEFC not in dimensions 1286 x 194 mm und 1286 x 243 mm



[www.blauer-engel.de/uz176](http://www.blauer-engel.de/uz176)



# The appropriate frame

The planks are framed by the grooves which emphasise their individuality in the overall floor design. The grooves can be U shaped or V shaped. Depending on their colour, they can either have a very prominent or a restrained effect.

## Two types of grooves

The 4-sided and centre U-groove bring out the best in large-scale natural stone decors.

The V-groove frames wood designs along the long side or on all sides – with a contrasting or subtle effect.



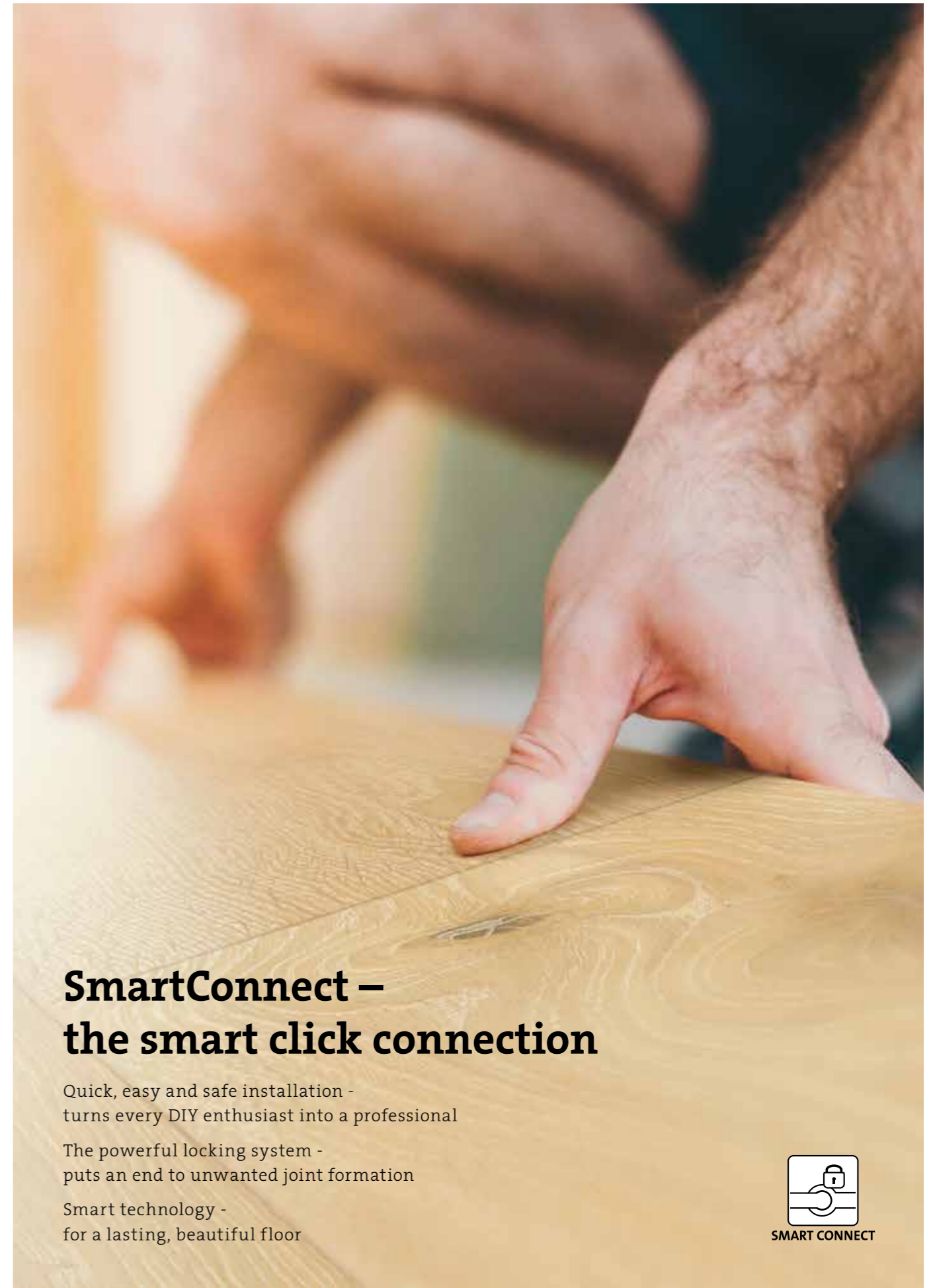
U-groove, 4-sided and centre



2-sided V-groove



4-sided V-groove



## SmartConnect – the smart click connection

Quick, easy and safe installation - turns every DIY enthusiast into a professional

The powerful locking system - puts an end to unwanted joint formation

Smart technology - for a lasting, beautiful floor



SMART CONNECT

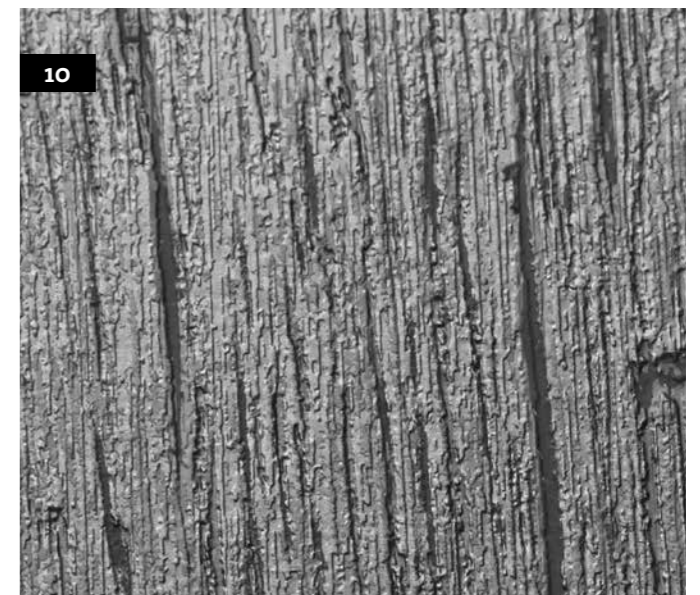
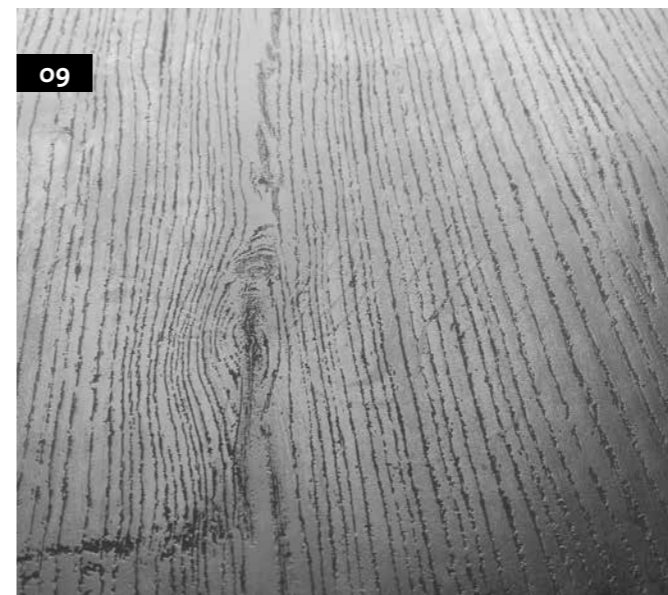
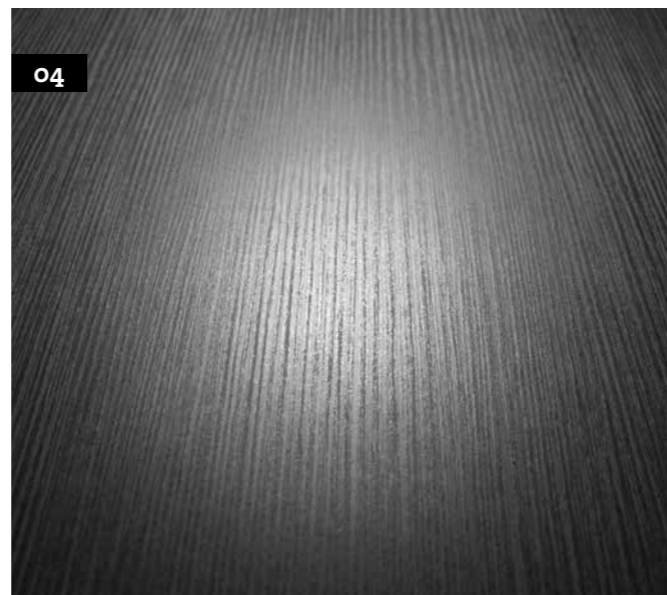
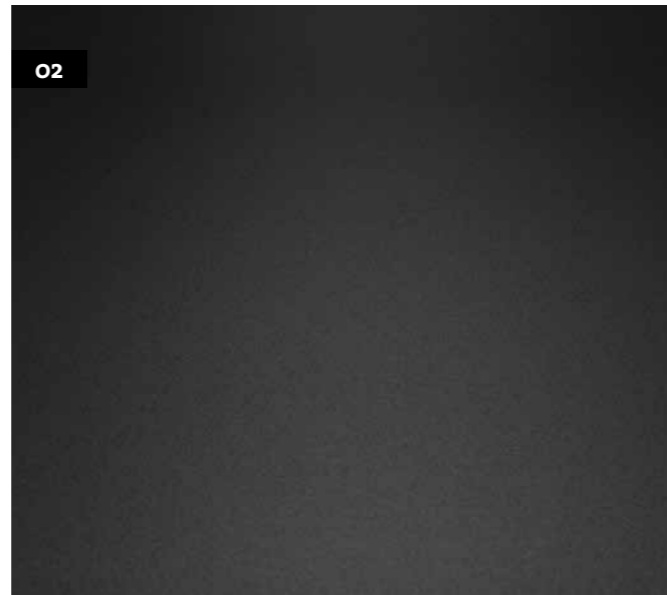
# This feels good

Of course we should like what we see, but that is not everything. It is only when seeing and feeling are in accord with each other that we achieve our goal: The perfect combination in perfect harmony. The ter Hürne laminate range features 10 different surface structures which make the floor come alive and

emphasise the effect of the decor in various ways. When a surface is referred to as „register embossed“, the structure matches the texture as depicted by the decor. The description of the surface structures consists of the tactile surface and visible degree of gloss.

- o1 structure | fine structured | matt
- o2 structure | smooth | matt
- o3 structure | finely brushed | matt
- o4 structure | linear brushed | matt
- o5 structure | embossed/fine brushed | matt

- o6 structure | rough pored | matt
- o7 structure | embossed/plane-marked br./aged | matt
- o8 structure | embossed/rough-sawn | matt
- o9 structure | embossed/fine brushed/sculptured | matt
- o10 structure | linear aged | matt



# Perfectly matched accessories

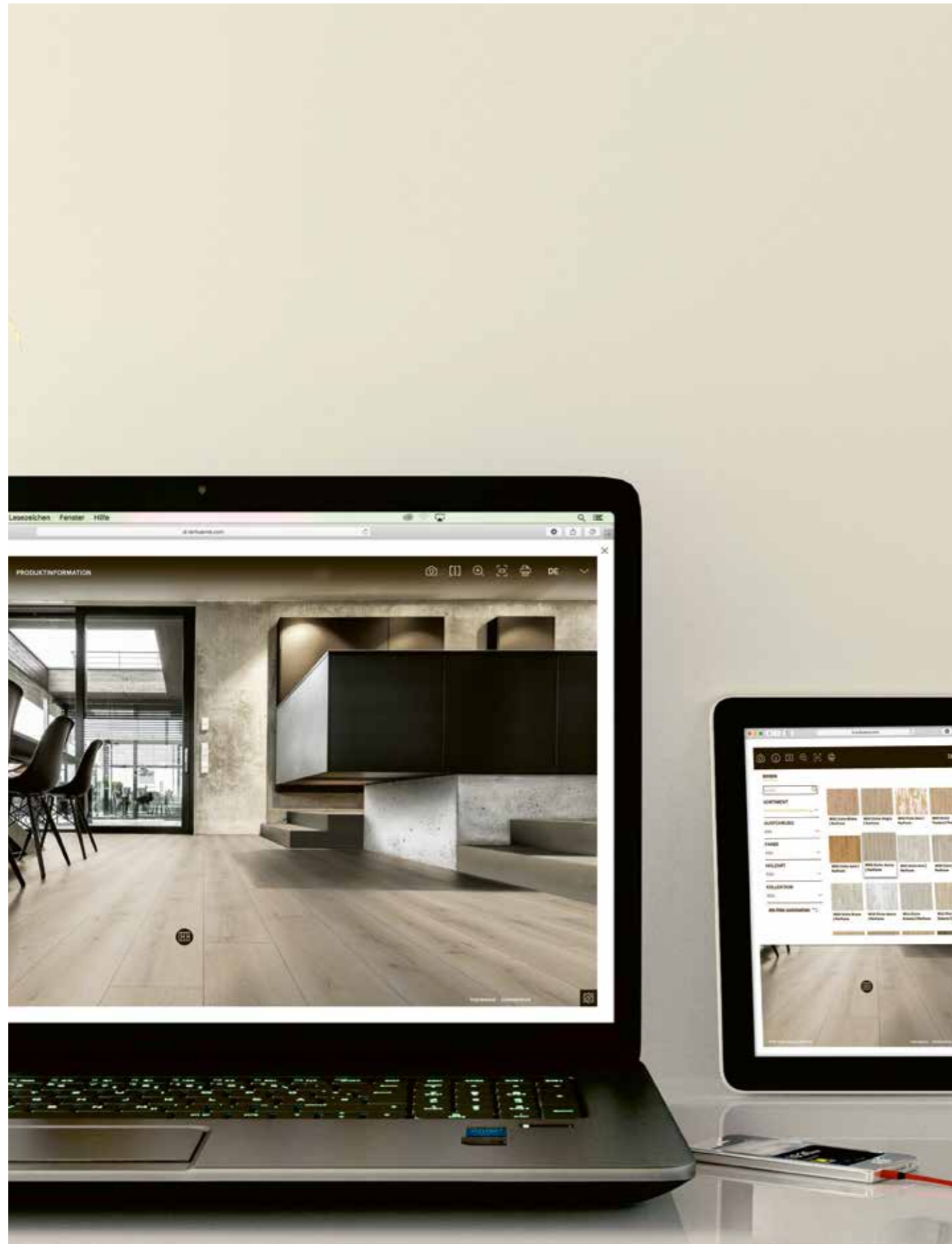
What constitutes a perfectly installed floor? On one hand, it looks beautiful and on the other — and you only notice this over time — it stands out due to its durability. To achieve this, what you mainly need are the right accessories— both before and after the installation. Our underlay material accessories and

care products are perfectly matched to the specifications of our floors, significantly increasing their durability, appearance and feel. And with our functional transition profiles and decorative skirtings you will achieve the perfect finishing touches.



# Room studio

Go ahead and start installing your own virtual floor: [www.terhuerne.de/raumstudio](http://www.terhuerne.de/raumstudio)



# Classic Line - classic and timeless

varied planks, strip floors and multi strip



# Trend Line - wide & impressive

wide planks and extra wide planks



# Grand Line - long & generous

long planks



A modern interior hallway with a floor lamp, a doorway leading to a kitchen, and framed art on the wall.

ter Hürne

## CONTACT

ter Hürne GmbH & Co. KG | Ramsdorfer Str. 5 | 46354 Südlohn | Germany

Phone: +49 2862 701-313 | [www.terhuerne.com](http://www.terhuerne.com)